



## Construction

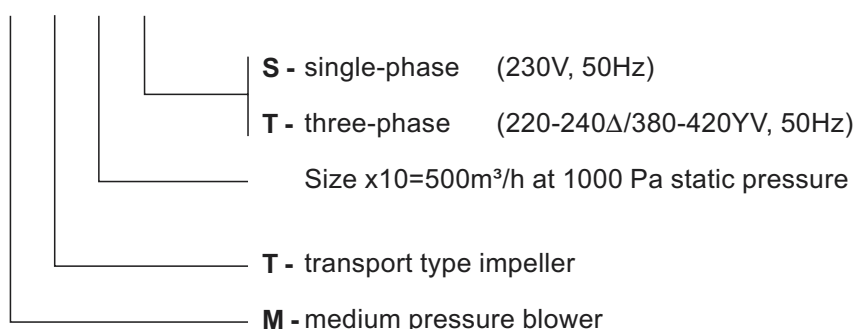
Single inlet, direct driven centrifugal fan with casing of cast aluminium. Impeller with self cleaning blades of cast aluminium.

## Motor

220-240/380-420V, 50Hz (380-420/660-690V above 3kW) three-phase or 220-240V, 50Hz single-phase asynchronous motor with squirrel cage. Insulation class F, enclosure IP55. Special voltage or frequency, improved enclosure IP65, 2-speed motors and explosion proof motor can be supplied on request. Wiring diagram, see page 179.

## Model numbering system

### MPB 30 S



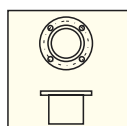
## Technical specification

| Type **  | Motor power kW | Voltage V | Maximum current A | Maximum duty m <sup>3</sup> /h | Pressure (max) Pa | Sound level * dB(A) | Weight kg | Article number |
|----------|----------------|-----------|-------------------|--------------------------------|-------------------|---------------------|-----------|----------------|
| MPT-03T  | 0,18           | 230/400   | 0,95/0,55         | 410                            | 1150              | 72                  | 8,5       | 113 550 100    |
| MPT-03S  | 0,18           | 230       | 1,8               | 410                            | 1150              | 72                  | 9,0       | 113 550 110    |
| MPT-25T  | 0,18           | 230/400   | 0,95/0,55         | 300                            | 1350              | 75                  | 8,5       | 113 550 120    |
| MPT-25S  | 0,18           | 230       | 1,8               | 300                            | 1350              | 75                  | 9,0       | 113 550 130    |
| MPT-25TD | 0,25           | 230/400   | 1,27/0,8          | 600                            | 1350              | 75                  | 10,7      | 113 550 125    |
| MPT-25SD | 0,25           | 230       | 1,93              | 600                            | 1350              | 75                  | 11,5      | 113 550 135    |
| MPT-40T  | 0,37           | 230/400   | 1,77/1,02         | 390                            | 2050              | 78                  | 14,5      | 113 550 160    |
| MPT-40S  | 0,37           | 230       | 2,9               | 390                            | 2050              | 78                  | 16,0      | 113 550 170    |
| MPT-50T  | 0,55           | 230/400   | 2,35/1,35         | 690                            | 2050              | 78                  | 15,0      | 113 550 180    |
| MPT-50S  | 0,55           | 230       | 4,00              | 690                            | 2050              | 78                  | 16,5      | 113 550 190    |
| MPT-80T  | 0,75           | 230/400   | 3,3/1,90          | 690                            | 2140              | 83                  | 18,5      | 113 550 200    |
| MPT-80S  | 0,75           | 230       | 5,20              | 690                            | 2140              | 83                  | 20,5      | 113 550 210    |
| MPT-90T  | 1,10           | 230/400   | 4,30/2,50         | 1170                           | 2140              | 83                  | 19,0      | 113 550 220    |
| MPT-90S  | 1,10           | 230       | 7,90              | 1170                           | 2140              | 83                  | 21,0      | 113 550 230    |
| MPT-160T | 2,20           | 230/400   | 8,00/4,60         | 2040                           | 2240              | 88                  | 31,0      | 113 550 240    |
| MPT-290T | 4,00           | 400/690   | 7,80/4,50         | 3700                           | 3250              | 91                  | 55,0      | 113 550 250    |
| MPT-300T | 3,00           | 230/400   | 11,3/6,50         | 2600                           | 3650              | 91                  | 44,0      | 113 550 245    |
| MPT-350T | 4,00           | 400/690   | 7,80/4,60         | 3150                           | 3650              | 92                  | 55,0      | 113 550 260    |

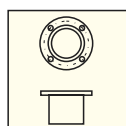
\*\* - all sizes with speed approx. 2800 rpm

\* - in the middle of the performance curve.

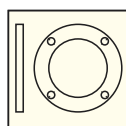
## Accessories



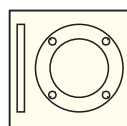
Connector suction side page 102



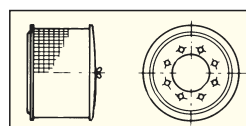
Connector pressure side page 102



Welding flange suction side page 103



Welding flange pressure side page 103



Filter suction side page 103

